



SOUTH

8

9

10

11

12

13

14

15

16

17

WEST

**8 Aichi Arts Center**

This cultural complex includes the Aichi Prefectural Museum of Art and the Aichi Prefectural Arts Theater, which can stage full-scale operas and houses one of the largest pipe organs in Japan.

**13 Sunshine Sakae**

This shopping/entertainment complex is also home to a giant 40-meter-tall Ferris wheel on the side of the building.

**9 Oasis 21**

The roof on this commercial facility is a unique water-filled glass oval around which visitors can take a relaxing stroll. The underground plaza hosts a variety of fun events.

**14 Mode Gakuen Spiral Towers**

This uniquely designed building spirals up 170 meters toward the sky and is home to vocational schools, shops, and restaurants.

**10 Hisaya-odori Park**

This park stretches approximately 2 km north to south and is laid out with fountains, ponds, and open spaces for holding various events. Nagoya TV Tower is located in the middle.

**15 Midland Square**

At 247 meters, this building is the highest in Nagoya and houses luxury brand stores, restaurants, and movie theaters.

**11 Sakae**

This bustling shopping/entertainment area boasts department stores, shopping centers, and high-end brand shops—making it the place to go for shopping in Nagoya.

**16 JR Central Towers**

These towers—the world's largest train station complex by floor area—rise directly above JR Nagoya Station and house a department store, a hotel, restaurants, and offices.

**12 Nadya Park**

Located in this commercial/office complex is the International Design Center Nagoya, the ideal place to check out the latest in design through galleries and shops.

**17 Nagoya Lucent Tower**

This 40-story skyscraper has a unique asymmetrical design that gives the east side of the building a slight upwards arc.

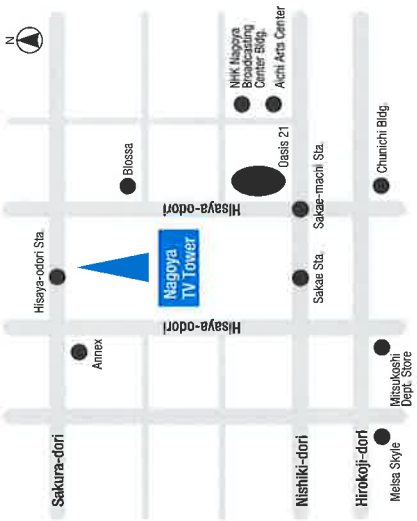
df: [www.nagoya-tv-tower.co.jp/](http://www.nagoya-tv-tower.co.jp/)  
**NAGOYA TV TOWER**

2014-10

**Search**

6-15 Saki, Nishiki 3-Chome, Naka-ku, Nagoya 460-0003

TEL: 052-971-8546 FAX: 052-961-0561



• **Opened:** June 20, 1961 • **Height:** 180 meters • **Weight:** 3,300 tons

**About Nagoya TV Tower**

- Sakae Station (station number H10) on the Higashiyama Line
- Sakae Station (station number M05) or Hisaya-odori Station (station number M06) on the Meijo Line
- Hisaya-odori Station (station number S05) on the Sakura-dori Line

**Getting There**

By subway	General admission
Adults	700 yen
College/high school students	600 yen
Junior high school/elementary school students	300 yen
Seniors (65 and older)	600 yen

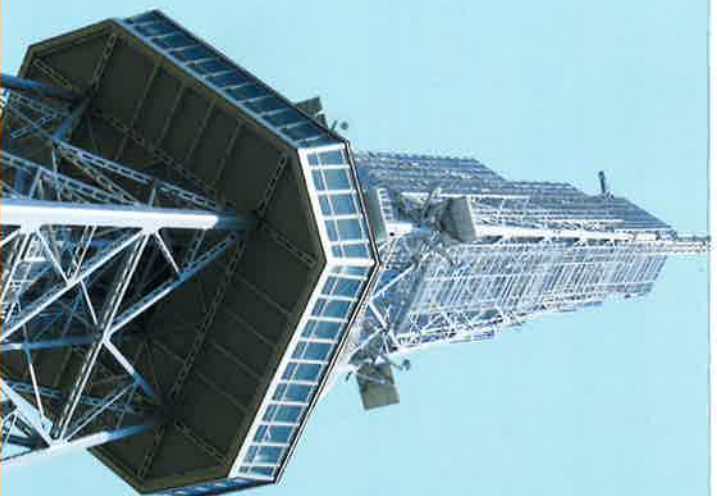
**Observation Deck Fees**

Business Hours	Months	Hours
■ Open every day of the year	April–December	10:00 a.m.–10:00 p.m.
	January–March	10:00 a.m.–9:00 p.m.

ENGLISH

# NAGOYA TV TOWER

A park below, the city all around—*Spectacular!*





NORTH



EAST



# Panoramic View

## A spectacular 360-degree view of the Nagoya cityscape

- 1 Nagoya Castle**  
This famous landmark of Nagoya was originally built in 1612 by *shogun* Tokugawa Ieyasu. Many of the buildings were destroyed during WWII, but its donjon was rebuilt in 1959.
- 2 Twin Arch 138**  
A 138-meter-high observation tower comprising two beautiful arches. From the observation floor at 100 meters, visitors get a magnificent view of the landscape.
- 3 Aichi Prefectural Office Main Building**  
Built in 1938, this building has a distinctive design that mixes Western and traditional Japanese architecture. A Japanese-castle-style roof adorns the building.
- 4 Nagoya City Hall**  
Built in 1933, this building fuses Western and traditional Japanese architectural design and is a Registered Tangible Cultural Property. Its roof resembles that of nearby Nagoya Castle.
- 5 Nagoya Dome**  
Home of the Chunichi Dragons, a professional baseball team based in Nagoya, this stadium can hold 40,000 spectators.
- 6 Seto Digital Tower**  
Built in 2003, this tower transmits digital TV broadcast signals.
- 7 Expo Memorial Park (Morikoro Park)**  
This spacious park, nicknamed Morikoro Park, was the site of Expo 2005.



**100 m** Sky Balcony  
(Outside Observation Deck)

Take in exhilarating views of the city to the feel of a gentle breeze.



**Lovers' Sanctuary**  
A plaque marks this spot as the perfect place for romantic marriage proposals.

**3F** Sky Terminal (Ticket Counter)  
Tickets to the observation decks can be purchased here.



**1F** Tower Square (Open Area)

An open-air café in this spacious area beneath the tower gives everyone a place to relax. A beer garden opens here every summer.



**90 m** Sky Deck  
(Inside Observation Deck)

On a clear day, you can see as far as the Suzuka Mountains. At night, you can enjoy the captivating lights of the city.



**Sky Walking**  
For spectacular views, walk up 245 observation steps on a tower tour held every Saturday, Sunday, and public holiday.

### History of the Tower

Nagoya TV Tower was constructed as part of a Nagoya City urban planning project to enable the broadcast of tourism information and television signals. It was designed with disaster prevention and urban scenery in mind by Waseda University Professor Tachū Naïto, who later designed Sapporo TV Tower and Tokyo Tower. The Nagoya tower was built by a shipbuilding company in Kobe, Japan using approximately 1,000 tons of steel materials. Construction began September 29, 1953 and took approximately eight and a half months to reach completion on June 19, 1954. Today, Nagoya TV Tower is the premier landmark of Nagoya. It was registered as a Tangible Cultural Property of Japan in 2005.

